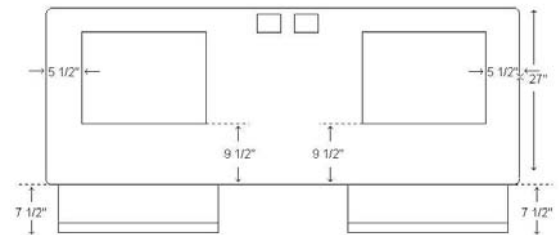
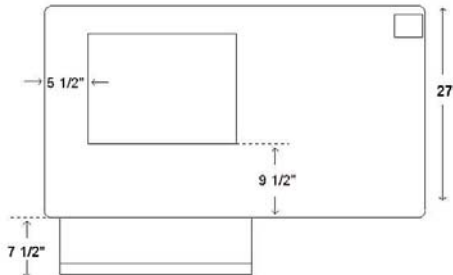


FLAT SCREEN TRAINING TABLE

A training table complete with a flip top door that stores a flat screen monitor. The monitor door safely rotates the screen below the worksurface, freeing the table for other activities. When the keyboard drawer is extended, it raises the monitor door enough for the user to open to a comfortable viewing angle. Tables may be powered and include integrated wire management horizontally and vertically through legs.

Features:

- Key board drawer with a mouse pad that slides right or left.
- Wire manager stores cable from mouse and keyboard to monitor.
- One grommet; two grommets for 72" wide and wider models.
- Accomodates monitor size up to 16^{1/2}" X 13^{1/2}".
- Monitor door is standard on the left side of the work surface providing room for a CPU. (On 36" wide models, the maximum CPU width is 8").
- Tables are 27" deep and 28^{1/2}" high. Keyboard extends 7^{1/2}".



DESIGN OPTIONS

Post Office Box 151777
Tampa, Florida
33684

VOICE
813.885.4950

WATS
877.800.3560

FACSIMILE
813.885.2994

WEB SITE
www.designoptions.com

Item

FSTR2736
FSTR2742
FSTR2748
FSTR2760

Description

36" Flat Screen Training Table
42"
48"
60"

Price

\$1067
\$1101
\$1077
\$1160

FSTR2772-2
FSTR2784-2

72" Flat Screen Training Table
84"

\$2073
\$2082

72" Wide and Wider Includes 2 Monitor Doors

Deduct \$575 if only one (1) door is required.

For height and electrical options, consult Customer Service.